

# Helpman LEX 14-7

## Specifications

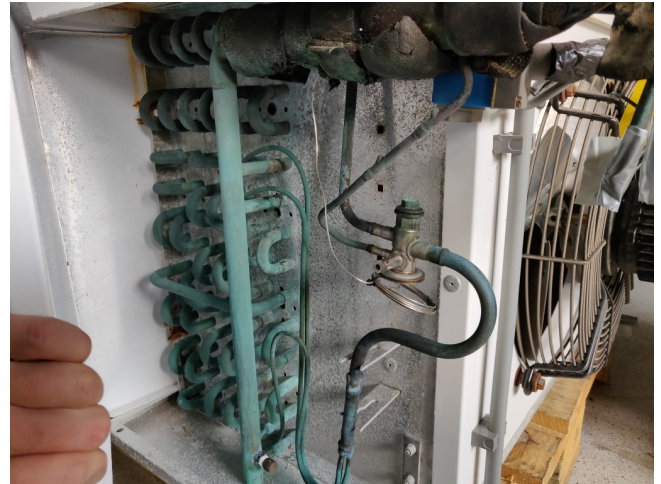
Производитель	Helpman
Тип	LEX 14-7
кВт	6
Хладагент	Freon
К-во вентиляторов	1
Расстояние между ламелями, мм	7
Оттайка	None
Поток воздуха м³/час	3.540
Размеры	970x692x710mm
Примечания	6kW at 8K // based on R404A // YOB 2012
Volume	8 dm3
вес	46kg
Stock	1



## Description

### Used Helpman LEX 14-7

Used helpman LEX 14-7 · Size 970x692x710mm (LxWxH) · Weight: 46Kg · Fin space: 7 · m3/h: 3.540 · Fans: 1 · Hertz fans: 50Hz · refrigerant R404A · \*\*All components of this used evaporator will be tested on good working, leak free condition (electro engines), coils, bearings) Choosing HOSBV means buying with warranty. We perform a industrial cleaning and rust spots will be covered. Also, we can arrange your shipment.



**type BH**

Alfa Laval EOOD  
1298 Sofia (BG), Treboch,  
with yard 52, 1/1-588, 590  
Tel: +359 2 421 98 80, Fax: +359 2 936 25 92

Type	LEX 14-7 230		
Serial Number	SA-1202-0500003703-10207-27696		
Refrigerant	R22/R134A/R404A/R401B/R407C/R417A/R507A		
Operating temp (TS)	-55/63	°C min/max	Voltage 230/50/1
Design Pressure (PS)	-1/25	Bar min/max	Year 2012
Total internal volume	8.0	L	
Weight (empty)	46	Kg	CE



## Blow Through Unit Coolers 1.5 - 40 kW **LEX**

Dimensions / Connections		Shipp.		Cooler weight		Coil surface		Int.	Refrig. conn.						
Cooler type	Dimensions mm						4 mm	7 mm	vol.	inlet	suction				
	A	B	D	F	G	H	K	4 mm	7 mm	dm <sup>3</sup>	O.D.	O.D.S.			
LEX 2-*	598	412	485	385	-	380	380	0.3	18	17	7.7	4.7	2.1	1/2"	1/2"
LEX 4-*	698	472	495	395	-	430	440	0.3	22	21	11.2	6.7	3.0	1/2"	1/2"
LEX 6-*	698	472	805	503	-	430	440	0.3	27	25	16.8	10.1	4.0	1/2"	1/2"
LEX 8-*	798	602	840	503	-	505	570	0.6	38	35	26.1	15.7	6.0	1/2"	22 mm
LEX 10-*	1105	820	895	395	-	430	880	0.5	38	32	22.4	13.5	6.0	1/2"	22 mm
LEX 12-*	1105	820	905	503	-	430	880	0.5	42	38	33.6	20.2	6.8	1/2"	28 mm
LEX 14-*	999	682	712	503	-	650	590	0.9	50	46	25.2	21.2	8.0	1/2"	28 mm
LEX 16-*	1110	792	750	520	35	675	750	0.7	55	51	34.4	27.2	10.4	1/2"	28 mm
LEX 18-*	1480	1180	890	520	35	500	1140	1.0	71	65	52.2	31.4	11.6	1/2"	35 mm
LEX 20-*	1540	1350	710	520	35	600	1320	1.3	95	88	70.5	42.4	15.5	1/2"	35 mm
LEX 22-*	1880	1550	750	520	35	675	1520	1.7	130	111	92.8	55.9	20.4	1/2"	42 mm
LEX 24-*	1880	1550	950	520	110	825	1520	2.2	139	128	119.0	69.8	28.2	1/2"	42 mm
LEX 26-*	2650	2328	750	520	35	675	2290	2.3	172	159	159.8	84.2	30.9	1/2"	54 mm
LEX 28-*	2950	2528	825	630	110	825	2290	3.0	202	186	174.7	105.2	39.8	1/2"	54 mm
LEX 30-*	3420	3098	825	630	110	825	3050	3.8	278	256	232.7	140.1	51.1	1/2"	54 mm

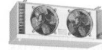
  

Fans / Electric Defrost		Fans 50 Hz		Electric defrost		
Cooler type	number	diameter	air volume	fan power	number of elements	defrost power <sup>3</sup>
		mm	ft <sup>3</sup> /min	nominal / absorbed <sup>4</sup>	coil	reduced
		mm	m <sup>3</sup> /h	W	dm <sup>2</sup>	kW
LEX 2-*	1	254	1020	30/85	1	1.28
LEX 4-*	1	305	1480	30/100	1	1.76
LEX 6-*	1	305	1420	30/100	2	2.64
LEX 8-*	1	356	2490	70/150	2	3.2
LEX 10-*	2	305	2970	30/100	1	3.2
LEX 12-*	2	305	2980	30/100	2	4.8
LEX 14-*	1	406	3240	70/235	5	4.5
LEX 16-*	1	457	4430	220/260	5	6.0
LEX 18-*	2	356	4980	70/160	2	5.4
LEX 20-*	2	406	6730	70/220	5	8.4
LEX 22-*	2	457	8600	220/260	5	13.2
LEX 24-*	2	508	11000	220/260	5	13.2
LEX 26-*	3	457	13000	220/260	5	19.2
LEX 28-*	3	508	16600	220/260	5	19.2
LEX 30-*	4	508	22200	220/260	10	24.0

HELPMAN

REFRIGERATION  
03-98

## Blow Through Unit Coolers 1.5 - 40 kW **LEX**



Blow through unit coolers are designed for use in a wide range of applications. They are available in a variety of capacities and configurations. The LEX series is a high efficiency, low noise, and low vibration unit cooler. It is designed for use in a wide range of applications. The LEX series is a high efficiency, low noise, and low vibration unit cooler. It is designed for use in a wide range of applications.

### Nominal Capacities (kW)

Cooler type	R 404A frosted DT <sub>1</sub>			For reference only dry conditions DT <sub>1</sub>		
	R 22 frosted DT <sub>1</sub>	R 134a frosted DT <sub>1</sub>	R 404A frosted DT <sub>1</sub>	R 22	R 134a	R 404A
<b>Fin spacing 4 mm</b>						
LEX 2-4	1.5	1.3	1.5	1.3	1.1	1.3
LEX 4-4	1.9	1.5	1.8	1.7	1.3	1.6
LEX 6-4	2.8	2.4	2.8	2.4	2.1	2.5
LEX 8-4	4.7	4.1	4.7	4.1	3.5	4.1
LEX 10-4	4.7	4.4	4.8	4.1	3.8	4.3
LEX 12-4	5.9	5.6	6.2	5.1	4.9	5.4
LEX 14-4	6.5	6.4	7.1	5.7	5.6	6.2
LEX 16-4	8.7	8.4	9.3	7.5	7.3	8.1
LEX 18-4	9.7	8.7	9.9	8.5	7.6	8.6
LEX20-4	12.8	10.8	12.7	11.2	9.4	11.0
LEX 22-4	16.1	13.0	15.4	14.0	11.3	13.4
LEX24-4	20.0	16.1	19.2	17.4	14.0	16.7
LEX 26-4	26.0	23.0	26.0	22.6	20.0	22.6
LEX 28-4	32.8	29.0	33.2	28.5	25.2	28.9
LEX 30-4	40.3	32.5	38.5	35.0	28.3	33.4
<b>Fin spacing 7 mm</b>						
LEX 2-7	1.3	1.2	1.3	1.1	1.0	1.2
LEX 4-7	1.7	1.4	1.7	1.5	1.2	1.4
LEX 6-7	2.5	2.2	2.5	2.2	1.9	2.2
LEX 8-7	4.1	3.7	4.3	3.8	3.3	3.7
LEX 10-7	3.7	3.6	4.0	3.2	3.2	3.5
LEX 12-7	5.0	4.9	5.3	4.4	4.3	4.6
LEX 14-7	5.5	5.5	6.0	4.8	4.4	5.2
LEX 16-7	7.4	7.3	8.0	6.4	6.3	7.0
LEX 18-7	8.5	7.9	8.8	7.4	6.8	7.6
LEX 20-7	11.4	10.0	11.4	9.8	8.7	9.8
LEX 22-7	14.5	12.4	14.3	12.8	10.7	12.4
LEX 24-7	18.1	15.6	17.8	16.7	13.6	15.5
LEX 26-7	22.8	21.2	23.4	19.8	16.4	20.4
LEX 28-7	28.5	26.5	29.3	24.8	23.0	25.3
LEX 30-7	36.5	31.0	35.9	31.7	27.0	31.2

### Capacities

- Lightly frosted coil
- Relative humidity 85 %
- Suction gas superheating 62 % of the temperature difference (DT<sub>1</sub>), with a minimum of 3.5 K
- Refrigerant liquid temperature 30 °C (for t<sub>1</sub> = -20 °C and below liquid temperature

### Correction Factors R 404A / DT<sub>1</sub>

DT <sub>1</sub>	Evaporating Temperature (t <sub>1</sub> ) °C									
K	+5	0	-5	-8	-10	-15	-20	-25	-30	-35
	1.00	0.98	0.95	0.92	0.88	0.82	0.75	0.68	0.60	0.52